



CMK ELECTRO POWER PVT LTD.
(An ISO 9001:2015 Certified Company)



Chemical Industries



Crane Industries



Paper Industries



Automobile Industries



Power Plant

Manufacturer of EOT Crane & Control Equipments

BEST QUALITY CRANE CONTROL EQUIPMENTS AT REASONABLE PRICING



ABOUT US

CMK ELECTRO POWER (P) LIMITED is one of the leading manufacturer of high quality and wide range of material handling equipments and control equipments.

CMK ELECTRO POWER (P) LIMITED is an expert engineering and manufacturing company, which excels at high quality electric crane components CMK reach both world and domestic customers with affordable products that are produced by in one of the most modern production facilities through CMK organization. In addition to our crane control equipments that are produced with the world's leading technology, we offer traditions, ethical merits and our engineering success to our customers.

CORE PURPOSE

"To Maximize the human efficiency by providing technical solution and there by contributing to be a better tomorrow"

CORE VALUE

- We always Demands Excellence
- We always believes in hard work and Honesty
- We always Responsive & Result Oriented
- We always believes the Quality in all Aspects
- We always Respects to all & build a Strong Relationship

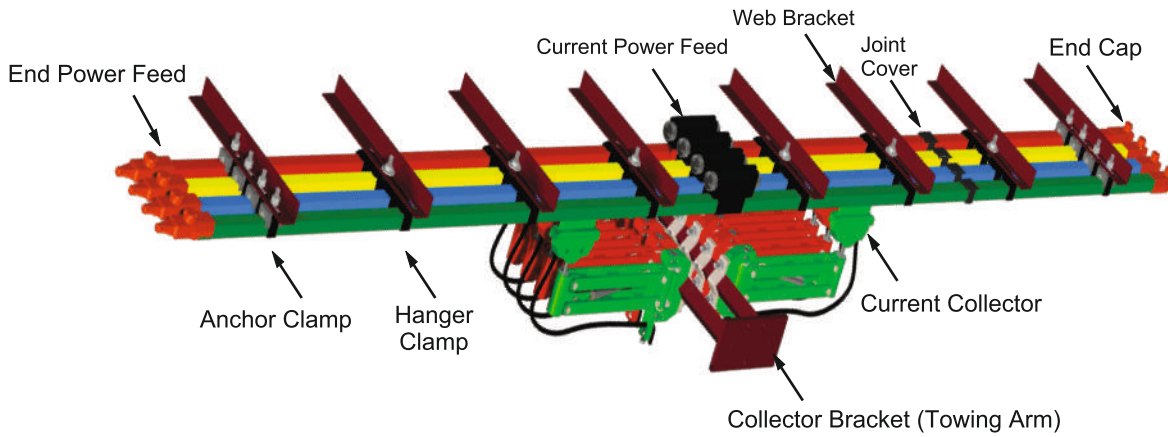
BHAG (Big Hairy Audacious Goal)

To Incorporate the Great practice of GE, Maximize the Efficiency of 50 million people and become 50 Billion Company by 2030

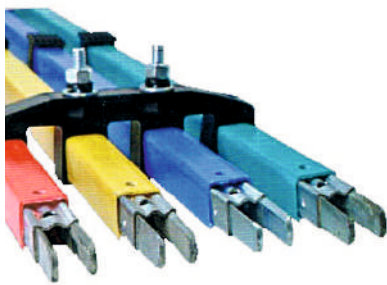



BRAND PROMISE

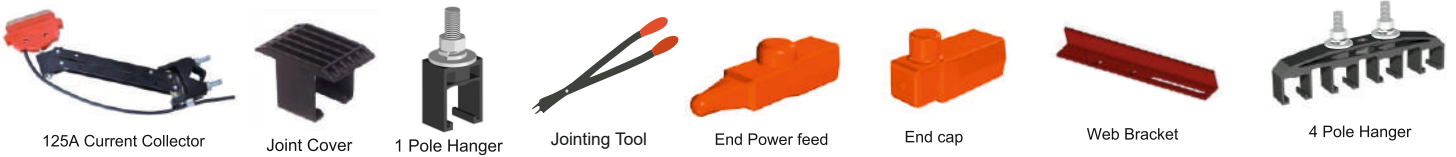
DSL SHROUDED BUSBAR SYSTEM



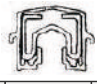
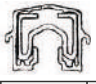
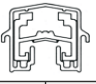
SAFELEAD-1 PIN JOINT BUSBAR

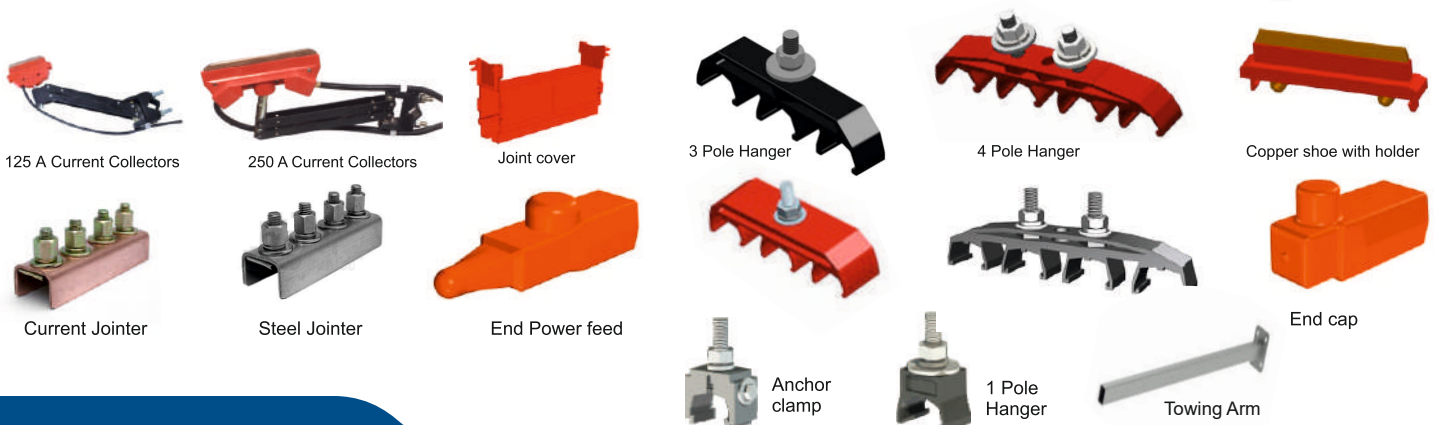
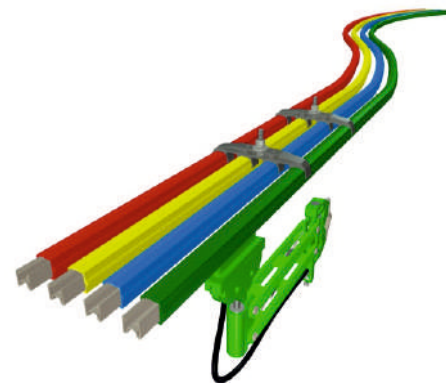


SHROUDED CONDUCTOR TECHNICAL DATA SHEET					
	MODEL NO.	SL1-60A	SL1-100A	SL1-125A	SL1-250A
Material	Galvanized Steel			Copper	
Impedance milli Ohms/m +35°C	3.6	2.9	2.5	0.345	0.335
DC Resistance milli Ohms/m +35°C	3.5	2.86	2.45	0.333	0.333
Conductor Rating At +35°C CDF 100%	60A	100A	125A	250A	400A










SAFELEAD-2 BOLT JOINT BUSBAR

SHROUDED CONDUCTOR TECHNICAL DATA SHEET								
	MODEL NO.	SL2-60A	SL2-100A	SL2-125A	SL2-160A	SL2-250A	SL2-400A	SL2-200A
Material	Galvanized Steel			Copper			Aluminum with ss	
Impedance milli Ohms/m +35°C	3.55	2.86	1.92	0.36	0.30	0.22	0.32	0.29
DC Resistance milli Ohms/m +35°C	3.52	2.84	1.92	0.35	0.27	0.18	0.30	0.26
Conductor Rating At +35°C CDF 100%	60A	100A	125A	160A	250A	400A	200A	315A



SAFELEAD-3 HEAVY DUTY BUSBAR

SHROUDED CONDUCTOR TECHNICAL DATA SHEET							
MODEL NO.	SL3A-500A	SL3A-800A	SL3A-1000A	SL3C-500A	SL3C-800A	SL3C-1000A	SL3C-1200A
Material	Aluminum With S.S Strip			Copper			
Conductor Rating +35°C cdf 100%	500A	800A	1000A	500A	800A	1000A	1200A
Impedence mili Ohms/M +35°C	0.158	0.145	0.138	0.162	0.137	0.128	0.128
DC resistance mili Ohms/M +35°C	0.098	0.075	0.052	0.106	0.059	0.035	0.035
Standard Conductor Length	4.5 Mtr	4.5 Mtr	4.5 Mtr	4.5 Mtr	4.5 Mtr	4.5 Mtr	4.5 Mtr
Conductor Joint	BOLTED	BOLTED	BOLTED	BOLTED	BOLTED	BOLTED	BOLTED
Conductor Rating At 100 % +35°C	500A	800A	1000A	500A	800A	1000A	1200A



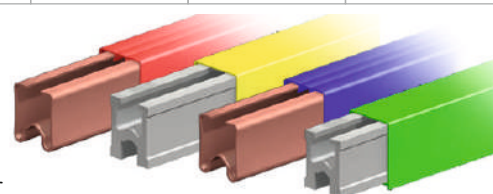
250 amp Current Collector



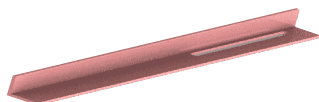
500 amp Current Collector



Copper Shoe With Holder



Hanger Clamp



Web Bracket










Joint Cover



Center Power Feed

SAFELEAD-4 ENCLOSED CONDUCTOR BAR

SHROUDED CONDUCTOR TECHNICAL DATA SHEET							
MODEL NO.	TR-60 40A	TR-60 60A	TR-85 40A	TR-85 70A	TR-85 100A	TR-85 140A	TR-85 200A
Material	Aluminum With S.S Strip		Copper				
Conductor Rating +35°C cdf 100%	40A	60A	40A	70A	100A	140A	200A
Impedence mili Ohms/M +35°C	17.9	11.38	18.38	11.01	7.87	5.55	3.67
DC resistance mili Ohms/M +35°C	17	11.33	18.27	10.96	7.83	5.43	3.65
Copper Strip Section (mm)	10	15	9.3	15.5	21.7	31	46.5



Joint Cover



Hanger Clamp



End Power Feed



Towing Arm



End Cap



25 A Current Collector



35 A Current Collector



70 A Current Collector



Joint Cover Steel



Hanger Clamp Steel



Copper Shoe



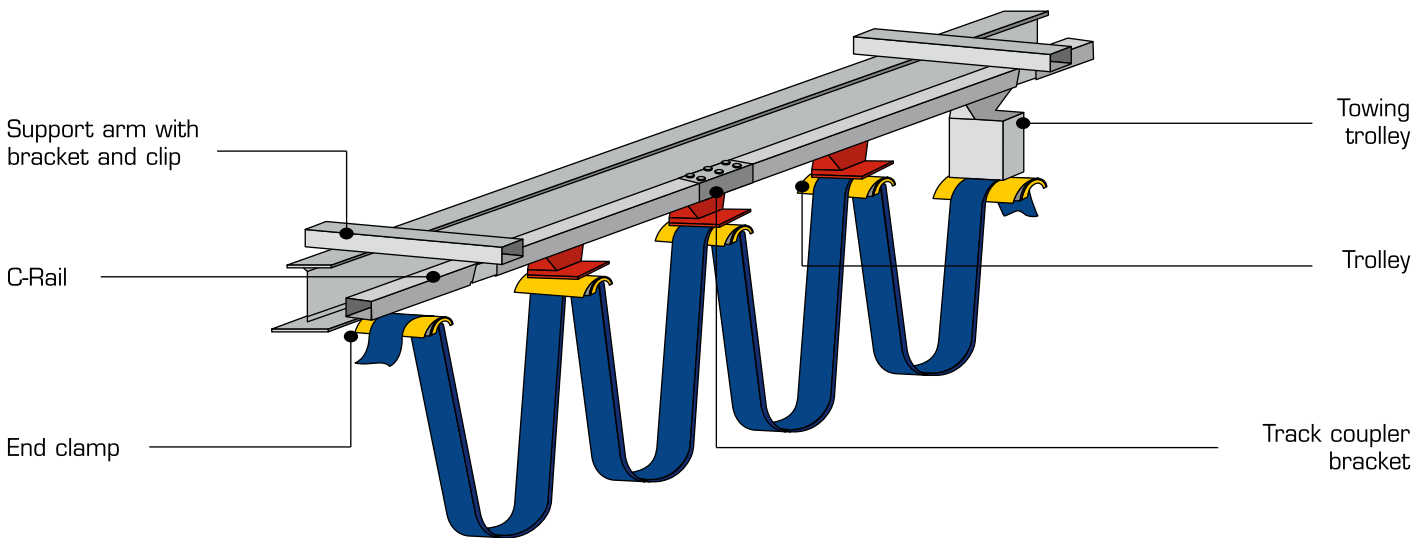
Central Power Feed

APPLICATIONS

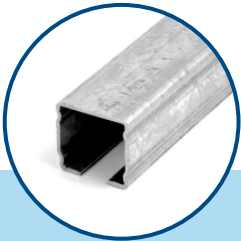
Shrouded DSL initiations for EOT Cranes, Electric Hoists, Straight/ Curved Monorails, Conveyors, Amusement Drives, Electric Trolley, Transfer Cars, Automated storage systems, Material handling systems etc. Aluminum Conductors for Corrosive atmosphere

FESTOON SYSTEM (C-RAIL)

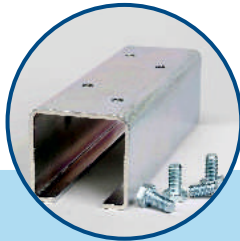
C-rail festoon system are used to electrify various types of mobile equipment. They can be designed not only to support and protect flat and round electrical cables, but air and water hoses as well. Festoon systems are typically used on overhead cranes, port cranes, refuse cranes and other material handling applications. This system is also used for the electrification of moving machineries.



C-track



Track Joiner



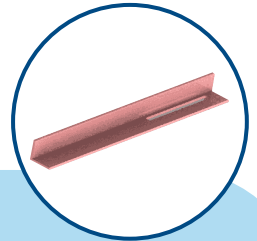
Hanger Clamp



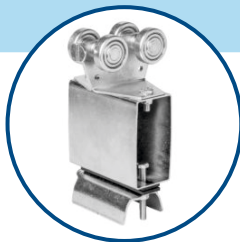
C- Rail Cable Trolley



Web Bracket



End Trolley



Towing Trolley



Plastic Trolley



Cable Trolley



Towing Arm

LEVER LIMIT SWITCH

Lever Limit Switch is used for heavy duty EOT Cranes Wagon shunting devices etc., to prevent over travelling or over traversing on power and control circuit up to 500 volts AC 50 Hz and 10amps and 40 amps current rating.

Function: The lever Limit switch operates when its lever reaches its pre-determined position and the lever is moved over a projecting member fixed on the Girder The Limit Switch contacts are automatically reset when the lever returns to zero position due to spring action.



SPECIFICATION

Body Material : Aluminum casting
Enclosure : IP-54
Mounting Position : Vertical
Cable Entry : $\frac{3}{4}$ " Conduit

Rated Voltage : 500V
Thermal Test Current : 40 Amp
No. of contacts : 2/3/4
Mode of operation : 2 way self resetting



SPECIFICATION

Body Material : M.S. sheet
Enclosure : IP-44
Mounting Position : Vertical
Cable Entry : $\frac{3}{4}$ " Conduit

Rated Voltage : 500V
Thermal Test Current : 40 Amp
No. of contacts : 2/3/4
Mode of operation : 2 way self resetting



SPECIFICATION

Body Material : Black Nylon
Cover Material : Impact proof thermoplastic
Enclosure : IP-65
Mounting Position : Any
Drive : Worm Drive

Cable Entry : $\frac{3}{4}$ " Conduit
Contact Material : Double break silver cadmium
Wire Connection : Screw terminal
Rated Voltage Insulation : 500 V / A.C
Thermal Test Current : 16 Amps

GRAVITY / COUNTER WEIGHT LIMIT SWITCH

Weight Operated Limit Switches are used on control/power circuit of reversing drives so as to limit their rotation / movement within a predetermined position



SPECIFICATION

Body Material : Power Coated Aluminum Die Cast
Enclosure : IP-55
Mounting Position : Floor
Cable Entry : $2\frac{3}{4}$ " Conduit
Rated Voltage : 500V / AC

Thermal Test Current : 10/40 Amp
No. of contacts : 2/3/4
Wire Connection : Screw terminal
Operation : 720/hour



SPECIFICATION

Body Material : M.S. sheet
Enclosure : IP-44
Mounting Position : Floor
Cable Entry : $2\frac{3}{4}$ " Conduit

No. of contacts : 2/3/4
Contact : Double Break Silver Cadmium

ROTARY GEAR LIMIT SWITCH

Rotary Gear Limit Switch is basically consists of heavy duty worm gear drive. The worm gear unit is built in a cast housing fitted on main body of Limit Switch. The cam shaft which extends from behind the gear in to housing, accommodates the cams adjustable actuators which are fitted on the cams. These actuators strikes the contact finger of respective contacts.

Function: Limit Switch is to stop the mechanism of drive at the extreme clock wise/anti clock wise position. These rotary limit switches are particularly suited for use on reversing drives such as electric hoists, winches, overhead cranes and traverse.

Application: Rotary geared type limit switches are suitable for use reversing drives such as hoists, winches, rolling mills and various other mechanisms used such used in steel plants such as coke oven and feeding machinery.

ALUMINUM BODY ROTARY GEAR LIMIT SWITCH



SPECIFICATION

Body Material : Aluminum Die Cast
Degree of Protection : IP-55
Gear Ratio : 1:48, 1:60, 1:96
Drive : Worm Drive

Cable Entry : 3/4" Conduit
Rated Voltage : 500V / A.C.
Thermal Test Current : 10/40 Amp
No. of contacts : 2/3/6 Maximum

HEAVY DUTY CASTING ROTARY GEAR LIMIT SWITCH



SPECIFICATION

Body Material : CI Casting With Sheet Cover
Degree of Protection : IP-45
Gear Ratio : 1:48, 1:60, 1:96
Drive : Worm Drive

Cable Entry : 3/4" Conduit
Rated Voltage : 500V / A.C.
Thermal Test Current : 10/40 Amp
No. of contacts : 2/3/6 Maximum

FG ROTARY GEAR LIMIT SWITCH



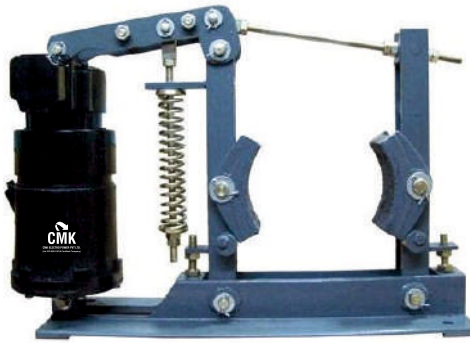
SPECIFICATION

Body Material : Black Nylon
Cover Material : Impact proof thermoplastic
Degree of Protection : IP-65
Gear Ratio : 1:12, 1:25, 1:50, 1:100, 1:200, & 1:400
Drive : Worm Drive

Cable Entry : 2, 3/4" Conduit
Maximum Rotation Speed : 1200 rpm
Contact Material : Double Break Silver Cadmium
Rated Voltage : 500V / A.C.
Thermal Test Current : 10 Amp

ELECTRO HYDRAULIC THRUSTER BRAKE

Our mill duty Thruster Brakes are suitable for 440 Volts, 3 Phase A.C. supply for a wide range of drum sizes, from 100mm to 600 mm dia. Higher sizes can also be supplied against specific requirements. The brake is applied by the tension of the compressed springs mounted vertically between the thruster and brake lever. The thruster rods are connected with the brake by means of an angle lever. As the piston travels upwards the angle lever turns, pushes the brake rod and compresses the brake spring. Simultaneously, the brake lever on the other side of the wheel (Brake Drum) is retracted.



Brake Model	Brake Drum Dia mm	Brake Torque		Brake Model	Brake Drum Dia mm	Brake Torque	
		kg-m	N-m			kg-m	N-m
MDT-100-18	100	6	60	MDT-400-46	400	90	900
MDT-150-18	150	9	90	MDT-400-68	400	110	1100
MDT-160-18	160	9	90	MDT-500-48	500	190	1900
MDT-200-18	200	20	200	MDT-500-68	500	290	2900
MDT-250-18	250	35	350	MDT-500-114	500	485	4580
MDT-250-34	250	42	420	MDT-600-68	600	350	3500
MDT-300-34	300	62	620	MDT-600-114	600	580	5800

ELECTRO HYDRAULIC THRUSTERS

Electro-Hydraulic Thruster A compact 60watt, 2800 rpm. 415v/50Hz/3-ph, non-ventilated motor is directly mounted on the top of a moving aluminum piston. A cast iron tank containing the brake fluid acts as the cylinder, the piston separates the cylinder into high pressure and low pressure chambers. The bi directional impeller is mounted directly on the motor shaft. The upper clevis is integral with the top and shield of the motor and the lower clevis is on the bottom of the tank cover.

Model No.	Rated Thrust (kg)	Output Stroke (S)	Input Watts
EHT-18K	18	51	90
EHT-34K	34	51	150
EHT-45K	45	51	180
EHT-68K	68	76	200
EHT-113K	113	76	250
EHT-225K	225	127	420
EHT-295K	295	127	580



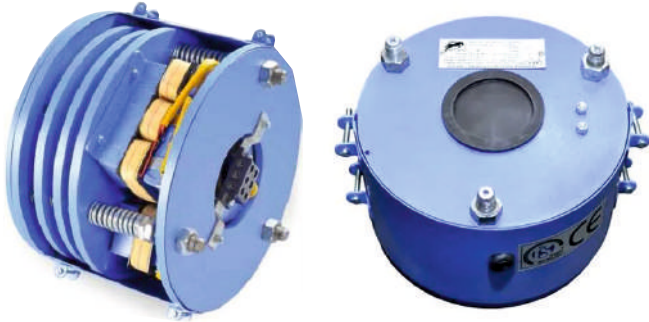
BRAKE SHOE LINER

CMK Manufacturing a wide range of brake linings, which is of excellent quality. These are made of soft but tough heat resistant material with a high coefficient of dynamic friction we offer rubber brake linings, asbestos brake linings, automotive brake linings, which are made using a unique blend of ingredients such as asbestos, friction dust, resins etc. These products are used in industrial brake application.



AC FAILSAFE ELECTROMAGNETIC DISC BRAKE

Very compact and modern in design, Foundation is not necessary as they are directly mounted on non-driving end shaft of the motor. It consist of liner prices (Brake Disc) with square hole at the center One corresponding piece of square hub is supplied with the brake. This hub is keyed to the motor shaft and the finer plate is free on this hut Normally Liner plate is gripped between two discs with the help of spring pressure they work on 230 / 415 VAC When the current is supplied to the brake, one disc is attracted by electromagnet against spring pressure and the liner plate is released. Thus the brake is 'off'. Once the brake is set it dose not required adjustment or maintenance When the liner plates wears with the use then only air gap is to be maintained periodically An arrangement to release the brake manually could be provided on request



RANGE	Tech.Data			
	T Kg. m	VA	Sq. Hub M	N
EMD-125	0.2	80	28.0X28.0	25
EMD-150	1.1	80	38.1X38.1	25
EMD-150X	2.2	80	38.1X38.1	45
EMD-190	2.5	165	38.1X38.1	28
EMD-190X	4.5	165	38.1X38.1	45
EMD-235	4.0	205	50X50	28
EMD-235X	6.0	205	50X50	45
EMD-290	5.5	275	50X50	30
EMD-290X	11	275	60X60	45
EMD-290XX	14	275	60X60	60

ELECTROMAGNETIC DC BRAKE

Our DC Brake has a name as absolute reliable brake for use in almost every application. As standard, this brake is available in 10 different sizes for static or dynamic braking with re- settable air gap design. Due to several variations and options, this brake series is preferred by motor manufactures for universal use.

Benefits :

- ▶ manual hand release
- ▶ micro switch or inductive sensor to monitor brake function or wear limit
- ▶ friction plate or adopter flange
- ▶ taped bores for tacho maunting
- ▶ dust protection ring
- ▶ temperature feeler
- ▶ rest period heating
- ▶ low noise version



AC SOLENOID BRAKE

AC Solenoid Brake that are suitable for AC supply up to 440 volts, and are available for a wide range of drum sizes from 100mm to 380mm Dia. We stand in the midst of prominent electromagnetic brakes suppliers based in India

AC Brakes

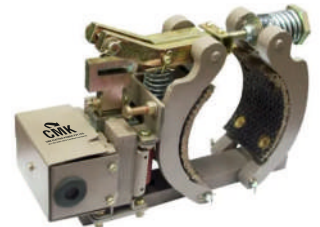
- ▶ 4" Dia / 5.5" Dia / 7" Dia

Solenoids

- ▶ Type : SLB - 25 mm stroke length
- ▶ Type : SLD - 31.4 mm stroke length

Features

- ▶ Class F- insulation of the coil
- ▶ Continuous & intermittent duty
- ▶ Long life & ease of maintenance
- ▶ Ideally suited for applications such as Cranes, Hoists, Machines, Valves,Conveyers



AC SOLENOID BRAKE - TYPE-S

Type of Brake	Wheel Inch		Max. Torque		Duty
	Inch	MM	Lb. ft.	Nm	
S-4	4	101.6	10	13.6	Continuos
S-5	5.5	139.7	25 35	34.0 48.0	Continuos intermittent
S-7	7	177.8	50 75	68.0 102.0	Continuos intermittent



STAINLESS STEEL PUNCHED GRID RESISTORS

Resistors are designed to meet requirements of both A.C. & DC applications. The basic types of resistors are stainless Steel and Punched Steel Resistors these are manufacture for current ratings from 10 to 800 Amps. Continuous resistors of higher ratings are manufactured using 2 or more parallel paths. Resistors with short time rating up to 3000 Amps or even more for neutral earthing are possible which suitable for system voltage up to 11 kv and above,

RATED VALUE (Ohms)	Grid Type	Current rating for various duty factors (Amps)			
		25% ED	40% ED	60% ED	100% ED
0.010	Ps10	390	325	280	234
0.022	PS22	265	220	190	158
0.032	PS32	220	182	153	131
0.046	PS46	185	151	130	110
0.068	PS68	152	126	110	90
0.100	PS100	125	103	88	74
0.150	PS150	101	84	72	61
0.220	PS220	83	70	59	50
0.300	PS300	82	59	50	43
0.460	PS460	58	48	40	35
0.720	PS720	47	39	33	28
1.000	PS1000	40	33	28	24
1.500	PS1500	32	27	23	19
2.500	PS2500	25	21	18	15
4.500	PS4500	15	13	11	8



Technical Specification

Enclosure	-sheet Steel Duty hot Dip Galvanized/painted
Mounting Protection degree	-IP-11/ IP-21/IP-23/IP-33
Current rating (s.s. grid) continuous	-7-400 Amps
Current rating (p.s. grid) continuous	-7-800 Amps
Cooling	-Air/oil cooled
Temperature rise	-2250C/2500C/3750C
Cable entry	-Bottom
Series Connection	-Punched grid elements are tig weided.

MASTER CONTROLLER

Master controllers are used for operation of contractor's equipment controlling E.O.T. Cranes & Rolling mills drives. The controllers are made in dust proof enclosure in IP-54 degree of protection, up to 6 notches either side with maximum 24 contacts as per desired sequence with spring return arrangement & deadman's handle arrangement are available Master Controllers are compact up to 4-0-4 step suitable for Grab-Hoist, CT-LT maximum contacts 16 per motion with spring return arrangement.

Technical Specification





Body Material : MS sheet	Frequency of operation : 1000 switching per hour
Enclosure : IP-44 / IP-54	No. of contacts : 24 maximum
Mounting Position : Horizontal/Vertical	No of step : 6-0-6 maximum
Rated Voltage : 500 V	Optional arrangement : Spring return/deadman's
Cable entry : 2x 20/2x26 Conduit	Handle Contact Material : Sliver Cadmium
Thermal Test Current : 40 amp	



ANTI-COLLISION DEVICE

(Collision avoidance system for crane and moving machineries)

The Anti-collision system is a safety device to avoid to collision of two electric overhead travelling cranes working on the same rails. For one pair of cranes two sets of anti-collision system are required. Each set consist of an Emitter/sensor module and a Reflector.

Product Specification				
Model No.:	ACC03	ACC10	ACC15	ACC102
Supply Voltage	230 V AC / 110 V AC (User Selectable)	230 V AC / 110 V AC (User Selectable)	230 V AC / 110 V AC (User Selectable)	230 V AC / 110 V AC (User Selectable)
No. of Set Points	Single	Single	Single	Two set point independently adjustable
No. of Output/ Relay	Single Relay / Single Output	Single Relay / Single Output	Single Relay / Single Output	Single Relay / Single Output
Contact Rating	3 Amps (max.) at 220 V AC	3 Amps (max.) at 220 V AC	3 Amps (max.) at 220 V AC	3 Amps (max.) at 220 V AC
Dimension	180mm x 145mm x 55mm	180mm x 145mm x 55mm	180mm x 145mm x 55mm	180mm x 145mm x 55mm
Reflector Size	130mm x 75 mm	130mm x 75 mm	130mm x 75 mm	130mm x 75 mm
Housing	Metal Housing	Metal Housing	Metal Housing	Metal Housing

3 PHASE DSL INDICATING LAMP

Bus-bar 3 Phase power indication approach towards Crane Bus-bar 3 Phase power indication for overhead cranes. It is a vibration-resistant solid-state LED based unit which provides along maintenance free operating life.

- ▶ Extremely low power consumption of < 5Watts/Phase.
- ▶ Use of ultra-bright LED for Omnidirectional view from long distances.
- ▶ Clear indication of phase energized status of supply on the adjacent bus-bar.
- ▶ So there is no confusion to plant personnel.
- ▶ Low Cost replacement of incandescent lamps which are generally used for this application.

APPLICATION :
Overhead Crane Bus Bar system.

Operating Temperature	20° to 85° C (optional on demand)
Operating Power	4.5 Watt / Phase
Supply Voltage	4 terminal wiring with one common neutral & three phase wiring
Color	Red, Yellow, Blue



WIRE LESS RADIO REMOTE CONTROL

CMK is one of the leading manufacturer and supplier of industrial wireless Radio remote controls

Application

Any equipment machine which is electrically operated through contactor control can be converted to remote operation. EOT Crane, Hoist, Conveyors, Mobile Hoppers, Gantry Cranes, Container Cranes, Jib Cranes PLC Controlled Equipments, Towre Cranes, Bascule bridges, Mud Guns & Drill Machines, Stacker-Reclaimers, Furnace doors, Transfer trolleys, Carnage covers, Manipulators and all moving machineries

Specification

Material : Glass-Fiber-PA

Enclosure Protection Class : IP-65

Power supply : 18-65V AC/DC,85-440 AC/DC(optional)

Control distance :100 mtrs (200 Mtrs is customised)

Temperature Range: -40°C to +85°C









WIRE LESS RADIO REMOTE CONTROL

CMK is one of the leading manufacturer and supplier of the industrial wireless radio remote control

	<p>F21-2S 1-speed, 2 buttons+Stop+magnatic key, IP65</p> <p>F21-2D 2-speed, 2 buttons+Stop+magnatic key, IP65</p>	
	<p>F21-4S 1-speed, 4 buttons+E-stop+ Start+magnatic key, IP65</p> <p>F21-4D 2-speed, 4 buttons+E-stop+ Start+magnatic key, IP65</p>	
	<p>F21-E1B 1-speed, 6 buttons+stop+ Start+magnatic key, IP65</p>	
	<p>F23-BB 1-speed, 10 buttons+stop+start, IP65</p>	
	<p>F21-E1B(2TX) 1-speed, 6 buttons+stop+start (2 transmitter) , IP65</p> <p>F23-BB(2TX) 1-speed, 10 buttons+stop+start(2 transmitter) , IP65</p>	
	<p>F24-6S 1-speed, 6 buttons+E-stop+ Start + magnetic key, IP65</p> <p>F24-6D 2-speed, 6 buttons+E-stop+ Start + magnetic key, IP65</p> <p>F24-8S 1-speed, 8 buttons+E-stop+ Start + magnetic key, IP65</p> <p>F24-8D 2-speed, 8 buttons+E-stop+ Start + magnetic key, IP65</p> <p>F24-10S 1-speed, 10 buttons+E-stop+ Start + magnetic key, IP65</p> <p>F24-10D 2-speed, 6 buttons+E-stop+ Start + magnetic key, IP65</p> <p>F24-12S 1-speed, 12 buttons+E-stop+ Start + magnetic key, IP65</p> <p>F24-12D 2-speed, 12 buttons+E-stop+ Start + magnetic key, IP65</p> <p>F24-60 Double joystick controller-IP65</p>	




Other Remote Model Available On Request

GIOVENZANA PENDANT STATION

	Model No.	Description	Description	Model No.					
	PL-05	single-speed 4 mechanically inter locked between pairs +N° 1 emergency stop	single-speed 6 mechanically interlocked between pairs +1 start / alarm + N° 1 emergency stop	PL-07					
	PL05D2	two-speed 4 mechanically interlocked between pairs +N° 1 emergency stop	two-speed 6 mechanically interlocked between pairs +1 start / alarm + N° 1 emergency stop	PL07D2					
	PL05D4			PL07D4					
	PL-08	single-speed 6 mechanically interlocked between pairs +1 start / alarm + N° 1 emergency stop	single-speed 8 mechanically interlocked between pairs +1 start / alarm + N° 1 emergency stop	PL-10					
	PL08D2	two-speed 6 mechanically interlocked between pairs +1 start / alarm + N° 1 emergency stop	two-speed 8 mechanically interlocked between pairs +1 start / alarm + N° 1 emergency stop	PL-12					
	PL08D4			PL-12					
	PLC04	Single-speed 2 Mechanically inter locked between pairs +1 start / alarm + N° 1 emergency stop	two-speed 4 mechanically interlocked between pairs +1 start / alarm + N° 1 emergency stop	PLB06					
	PLB04D2	Tow-speed 2 Mechanically inter locked between pairs +1 start / alarm + N° 1 emergency stop	two-speed 4 mechanically interlocked between pairs +1 start / alarm + N° 1 emergency stop	PLB06D2					
	PLB08	single-speed 6 mechanically interlocked between pairs +1 start / alarm + N° 1 emergency stop	<table border="1"> <tr> <td>8</td> <td rowspan="3">+1 start / alarm + N° 1 emergency stop</td> </tr> <tr> <td>10</td> </tr> <tr> <td>12</td> </tr> </table>	8	+1 start / alarm + N° 1 emergency stop	10	12	PLB10	
	8	+1 start / alarm + N° 1 emergency stop							
	10								
	12								
PLB08D2	two-speed 6 mechanically interlocked between pairs +1 start / alarm + N° 1 emergency stop	PLB12							
PLB08D4		PLB14							
PLB08D6		PLB14							

CONTACT BLOCKS	MULTI SPEED CONTACT BLOCKS	KEY SWITCH	ROTARY SWITCH	MUSHROOM OPERATOR Ø 30 TURN TO RELEASE EN ISO 13850
				
1 NC PL004001 1 NO PL004002	A2 VEL. NO+NO 1 NO + 1 NO PI004010	0-1 PL008001 1-0-2 PL006002	0-1 PL007001 1-0-2 PL007002	WITH VISION PI013001 STANDARD PL013002

GIOVENZANA FOOT SWITCHES

PRODUCT	DESCRIPTION	CONTACTS	CODE	This product is also available in different colors:		
	Foot switch with trigger mechanism requiring positive action to allow pedal operation. Colour: ■ PANTONE 102C	Slow break		Colour: ■ RAL 7035	Colour: ■ RAL 5010	Without rest position trigger mechanism. Colour: ■ RAL 3020
		1NO	IP7007			
		2NO	IP7008			
		1NO+1NC	IP7007I			
		1NO	IP7009			
		Two speeds 1NO+1NO	IP7015			

GIOVENZANA LIMIT SWITCHES

			
FGR-1	FGR-2	FCR	FFH

FLAT CABLE

Particularly suitable for supply and control circuits, lifting and handling equipment.

Technical Specification

- ▶ Comply with CEI 20-22 II (flame resistant)
- ▶ Insulation class 2/3
- ▶ Operational voltage 450/750V
- ▶ Sheathing colour blue
- ▶ Internal conductors with flexible PVC sheathing progressively numbered, plus earth conductor (yellow/green)
- ▶ Operating temperature -5°C +70°C



CODE	N! CROSS SECTION	Outer Diameter (Approximate)	STRAND n./mm	Weight Gram (Approximate)	Total Cross Section mm ²	CODE	N! CROSS SECTION	Outer Diameter (Approximate)	STRAND n./mm	Weight Gram (Approximate)	Total Cross Section mm ²
CP0415AF	4x1,5	15x5,2	30x0,25	150	6	CP2425AF	24x2,5*	54x13	50x0,25	1100	60
CP0815AF	8x1,5	29x5,5		300	12	CP0404AF	4x4	21x7,5	56x0,30	330	16
CP1215AF	12x1,5	41x5		420	18	CP0804AF	8x4	38x5		84x0,30	550
CP1615AF	16x1,5	54x8		510	24	CP0406AF	4x6	24x8	440		24
CP1815AF	18x1,5	43x11		700	27	CP0806AF	8x6	38,8x5	742		48
CP2415AF	24x1,5	51x13		1000	36	CP0410AF	4x10	35x11	7x12x0,40		800
CP0425AF	4x2,5	21x5,7	50x0,25	240	10	CP0416AF	4x16	36,5x12	7x18x0,40	1200	64
CP0825AF	8x2,5	33x6		420	20	CP4250AF	4x25	43x13	7x28x0,40	1700	100
CP1225AF	12x2,5	50x7		640	30	CP0435AF	4x35	40x14	7x39x0,40	2050	140
CP1625AF	16x2,5	41x13		1000	40						
CP1825AF	18x2,5*	50x13		1050	45						

ROUND CABLE WITH DUAL STRAIN RELIEF CORDS

Made for heavy duty applications in particular for pendant push button stations and moving electro mechanical components. The two steel wire ropes are embedded, diametrically opposed to PVC sheathing. The rope cut into lengths and just hooked the steering control to avoid any stress on the cable ROUND CABLE WITH DUAL STRAIN RELIEF STEEL WIRES-S05VVD7-F



Technical Specification

- ▶ Comply with CEI 20-22 II (flame resistant)
- ▶ Insulation class 2/30
- ▶ operational voltage 300/500V
- ▶ Sheathing colour blue
- ▶ Internal conductors with flexible PVC Sheathing progressively numbered, plus earth conductor (yellow/green)
- ▶ Operating temperature: -5°C +70°C
- ▶ 2mm steel wires
- ▶ Breaking point: 60 kg/mm²

CODE	N! CROSS SECTION	Outer Diameter (Approximate)		STRAND n./mm	Weight Gram (Approximate)	Total Cross Section mm ²
		CABLE	WIRE ROPE			
CP0815AUAF	8x1,5	11,6	23,6	30x0,25	225	12
CP1215AUAF	12x1,5	14,4	26,4		315	18
CP1615AUAF	16x1,5	16	28		415	24
CP1815AUAF	18x1,5	17	29		470	27
CP2015AUAF	20x1,5	18	30		525	30
CP2415AUAF	24x1,5	21	33		520	36

I-BEAM CABLE TROLLEY



CT-22
multi cable
Nickel Plating



CT-23
25mm to 38mm



CT-24
16mm to 20mm



CT-25
Alluminium Wheel
25mm to 38mm



CT-26
multi cable
Flat cable



CT-27
multi cable
Flat cable



CT-28
Tow wheel
multi cable



CT-29
Four wheel
multi cable



CT-30
Four wheel (adjustable)
multi cable



CT-31
Four wheel (Round-Flat
Cable)38mm to 75mm



CT-32
Heavy wheel
(Adjustable)Multi Cable



CT-33
UnbreakablePlastic
Four Wheel Heavy Trolley,
Multi Cable / Flat Cable

WIRE ROPE CABLE CARRIER PLASTIC & METAL



CC-01
Cable Clamping
Dia : 7 to 14 mm



CC-01 new
Cable Clamping
Dia : 7 to 14 mm



CC-02
Cable Clamping
Dia : 16 to 20 mm



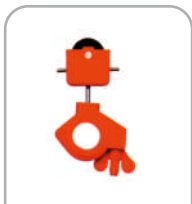
CC-03
Cable Clamping Dia
Single Cable Flat
16 to 35 mm



CC-04
Cable Clamping Dia
Tow Cable Flat
16 to 35 mm



CC-05
Cable Clamping Dia
25mm with bush type



CC-06
Cable Clamping Dia
38mm with bush type



CC-07
Cable Clamping
Dia : 11 to 25 mm



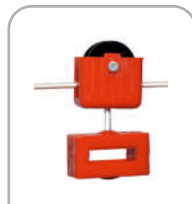
CC-08
Cable Clamping
Dia : 7 to 14 mm



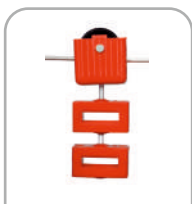
CC-09
Cable Clamping
Dia : 16 to 20 mm



CC-09 new
Cable Clamping
Dia : 16 to 20 mm



CC-10
Cable Clamping Dia
Single Cable Flat
16 to 35 mm



CC-11
Cable Clamping Dia
Tow Cable Flat
16 to 35 mm



CC-12
Cable Clamping
Dia : 25 mm



CC-13
Cable Clamping
Dia : 38 mm



CC-14
Cable Clamping
Dia : 11 to 38 mm



**Metal Cable
Carrier**

BRAKE DRUM

CMK Brake Drum with Flexible Geared Coupling that serve the dual purpose of coupling transmitting mechanical power as well as providing brake drum of suitable size for mounting brake within same space. The Models of Brake Drum Coupling are available 100 mm Dia to 600 mm Dia.



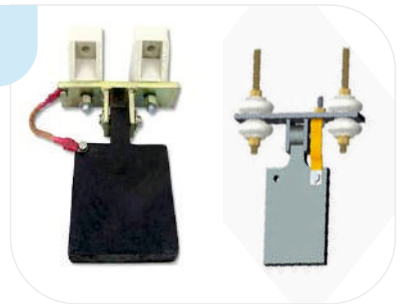
BRAKE DRUM GEARED COUPLING

CMK Brake Drum Couplings that serve the dual purpose of coupling transmitting mechanical power as well as providing brake drum of suitable size for mounting brake within same space. The Models of Brake Drum Coupling are available 4" to 10"



GRAVITY TYPE CURRENT COLLECTOR

Offered Gravity Type Current Collector advanced production unit as per set industry norms using supreme grade raw materials and innovative techniques sign of stage and earth conductors, low upkeep and strong plans. To serve the huge needs of customers, our designers try to adjust according to current market patterns.



FEATURE

- ▶ These are dust and shock safe framework
- ▶ Weather proof surface
- ▶ Current limit is 60-350 amp evaluated at 100% duty course
- ▶ Shock proof
- ▶ Sturdy design
- ▶ Fine finish

RAIL CLAMP (CUP TYPE / FLAT TYPE)

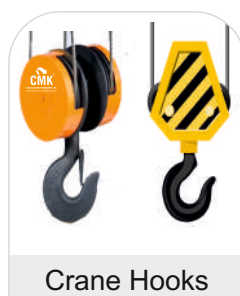
We offered clamps are widely used for preventing the movement of railroads. The provided clamps are manufactured using quality tested raw material under the observation of our deft professionals. Clients can buy these Rail Clamps from us in bulk at the most affordable rate.



FEATURE

- ▶ Easy to install
- ▶ Strong construction
- ▶ Robustness

CRANE SPARES & ACCESSORIES





GIOVENZANA
INTERNATIONAL B.V.



CMK ELECTRO POWER PVT. LTD.

CMK ELECTRO POWER PVT. LTD. is a stockist & distributor for giovenzana in the INDIA. We carry a large inventory of giovenzana products to include control equipment for material handling and lifting equipment.

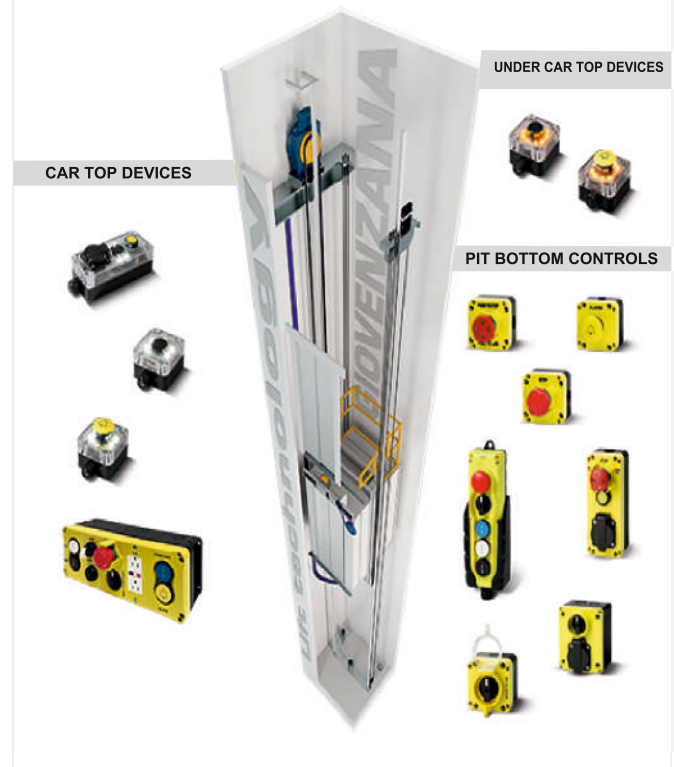
GIOVENZANA INTERNATIONAL B.V. is the global manufacturer of control equipment for material handling equipment, lift and elevator and automation products.

Control Equipments For Lift and Elevator



Giovenzana the undisputed leader in its field. The range includes pit bottom push button station, recall drive control units and inspection

LIFT TECHNOLOGY OF GIOVENZANA



Control Equipments For Material Handling Equipments



Crane Pendant station, Rotary gear Limit switches, Lever limit switches Busbar systems, C rail festoon system, Flat and pendant cables.

OUR ESTEEMED CUSTOMERS



Notes

A series of horizontal dotted lines for writing notes.



CMK ELECTRO POWER PVT LTD.
(An ISO 9001:2015 Certified Company)



+91 9512700227 +91 9327284882
+91 9712977598 +91 8980407311



cmk.electro@gmail.com
sales@cmkindia.com
Info@cmkindia.com



Survey No. 150 Plot No. 11, J.k. Industrial,
Village Lothda, Kotda Sangani State High
Way, Rajkot - 360022, Gujarat (INDIA).

Follow Us On:    

www.cmkindia.com